

## Mrs. Everson's Website

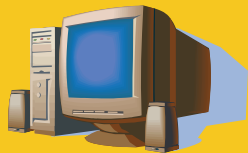
<http://de027.k12.sd.us/default.htm>

## Mitchell High School Website

<http://www.mitchell.k12.sd.us>

## About AP Courses

<http://www.collegeboard.com/>



*Access information online.*



**Mitchell High School**



**Mitchell High School**

920 North Capital  
Mitchell, SD 57301

Phone: 605-995-3034  
Fax: 605-995-3047  
E-mail: [deb.everson@k12.sd.us](mailto:deb.everson@k12.sd.us)



**Mitchell High School**



## Advanced Placement English Literature and Composition

▶ **Registration Information**

Recommended for college bound students

## ▶ A.P. English Literature and Composition

**Grade 12  
1 Credit**

**Course  
Number:**

1422 and 1423



**Prerequisites:**

**Must have successfully completed English I, English II, and English III.**

**Prerequisite: Must have earned a "C" or above in English III or receive prior teacher consent.** Students will be required to obtain a signature from their most recent English teacher indicating that the teacher was consulted for their recommendation.

**Requirements for graduation:**

Four units of English including English 1, English 2, Speech I or Debate (.5 unit of each), C.P. English III or English III, an English Literature elective, and .5 unit from any of the other English classes offered. AP English fulfills the English Literature and English Elective Requirements.

Registration  
Guidelines

### Course Description

Class focuses on close attention to reading and literary analysis of some of the great works of Western literature with an emphasis on British literature: *Beowulf*, *The Canterbury Tales*, Shakespeare's *Macbeth*, a sampling of Shakespeare's sonnets, the poetry of the Romantics, and many others.



Students will have numerous opportunities to discuss and to write – some will be informal and exploratory, some will require analysis or argument, and some will require writing effectively under time restraints encountered on the AP Exam or in college courses.

Prepare for  
College!

This course is designed to provide students the opportunity to practice the skills needed to succeed in college and perhaps earn college credit for their efforts.

**Earn  
College  
Credit**



DWU Dual Credit  
Available

Students may choose to take this class for dual credit through Dakota Wesleyan University at a reduced and reasonable rate. The college credit is equivalent to three semester credits. Students may also elect to take the Advance Placement Exam (nationally recognized test) in the spring. Colleges grant college credit to students who receive a qualifying grade on the exam.



920 North Capital  
Mitchell, SD 57301

Phone: 605-995-3034  
Fax: 605-995-3047  
E-mail: deb.everson@k12.sd.us